



MIRRA CHAIR

MAXIMUM SUPPORT, MINIMAL FUSS

To develop a work chair conceived as a kind of second skin, the German design team at Studio 7.5 paired imaginative use of materials and shapes with precision engineering. The unusual result: a product that does more for less.

Mirra adjusts naturally to the body of the person who sits in it. A conforming molded polymer back supports the entire spine. Elastomeric seat suspension follows the contours of the body, distributes pressure evenly, and provides aeration. A flexible front edge adjusts seat depth to keep the lower back in contact with support built into the backrest. A few easy-to-use manual adjustments fine-tune the fit and feel.

With a clean and light profile that reflects thoughtful and eco-friendly use of materials and technology, Mirra eases compatibly into any environment and quietly goes to work.

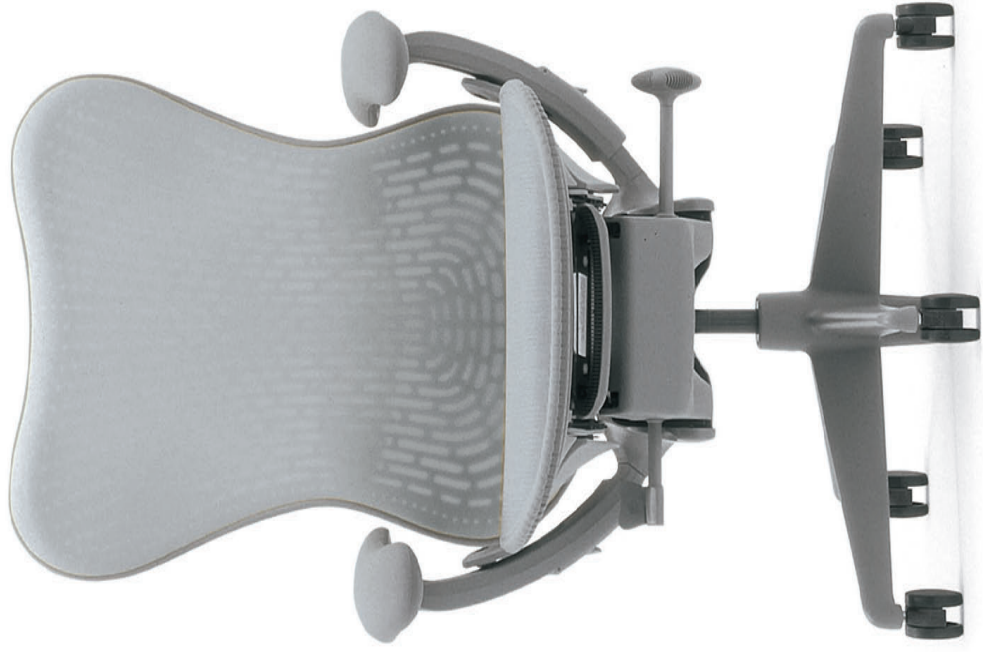




© 2010 Herman Miller, Inc. OMR200-2

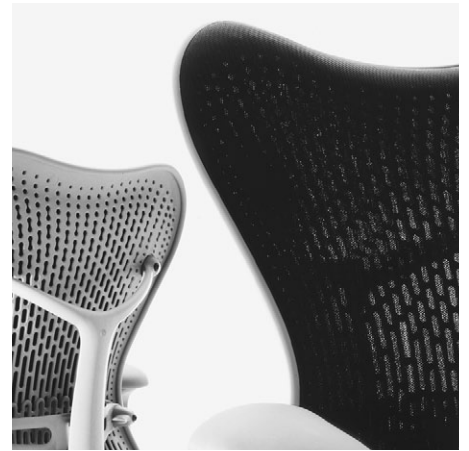


Mirra® Chairs





TriFlex™ Polymer Back



Latitude™ Back Upholstery



Full Range of Adjustments



AireWeave™ Suspension Seating



Materials

Mix or match the colors of Mirra's seat, back, and optional Latitude™ back upholstery to complement an interior, add contrast, or make a design statement. The molded-polymer, perforated back has a subdued presence that lightens the scale. Foam-free Latitude provides aeration and maintains the back's total support without adding bulk to the profile.

AireWeave™

Seat

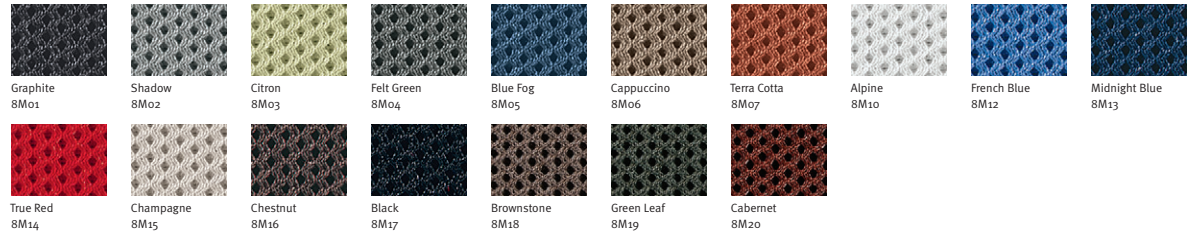


Back

Finish

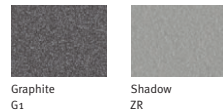


Latitude



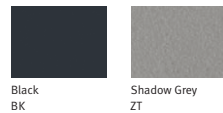
Base & Frame

Finish



Armpads

Finish



Samples are representative of the material to be supplied and may not indicate an exact match; some variation may occur. Visit hermannmiller.com for the current list of textiles and finishes, detailed application information, material specifications, and information on ordering samples.



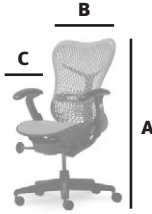
Design for the Environment:

- 96 percent recyclable and manufactured using 33 percent recycled content
- MBDC Cradle to CradleSM Gold certified
- GREENGUARD[®] certified
- level[™] 2 certified



Designers: Studio 7.5

Warranty: 12-year, 3-shift

**General Dimensions**

- A** height: 42.75 in.
B width: 27 in.
C depth: 17 in.

MIRRA CHAIRS hermanmiller.com/mirra

- Unique look and superior ergonomics at an attractive price.
- TriFlex[™] back and AireWeave[™] suspension conform to individual body dimensions for automatic comfort, aeration, and support.
- An eco-friendly chair that does more, requires less.

